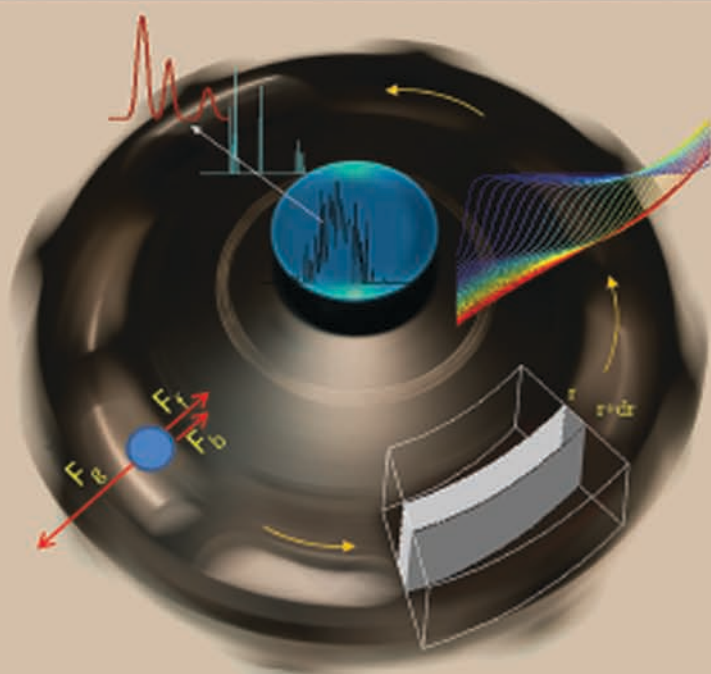


SEDIMENTATION VELOCITY ANALYTICAL ULTRACENTRIFUGATION

Discrete Species and Size-Distributions
of Macromolecules and Particles



Peter Schuck



CRC Press
Taylor & Francis Group

SEDIMENTATION VELOCITY ANALYTICAL ULTRACENTRIFUGATION

**Discrete Species and Size-Distributions
of Macromolecules and Particles**



Taylor & Francis

Taylor & Francis Group

<http://taylorandfrancis.com>

SEDIMENTATION VELOCITY ANALYTICAL ULTRACENTRIFUGATION

**Discrete Species and Size-Distributions
of Macromolecules and Particles**

Peter Schuck

*Dynamics of Macromolecular Assembly Section
Laboratory of Cellular Imaging and Macromolecular Biophysics
National Institute of Biomedical Imaging and Bioengineering
National Institutes of Health, Bethesda, Maryland, USA*



CRC Press

Taylor & Francis Group
Boca Raton London New York

CRC Press is an imprint of the
Taylor & Francis Group, an **informa** business

Author's contribution to the Work was done as part of the Author's official duties as a NIH employee and is a Work of the United States Government. Therefore, copyright may not be established in the United States. 17 U.S.C. § 105.

CRC Press
Taylor & Francis Group
6000 Broken Sound Parkway NW, Suite 300
Boca Raton, FL 33487-2742

CRC Press is an imprint of Taylor & Francis Group, an Informa business

No claim to original U.S. Government works

Printed on acid-free paper
Version Date: 20160920

International Standard Book Number-13: 978-1-4987-6894-8 (Hardback)

This book contains information obtained from authentic and highly regarded sources. Reasonable efforts have been made to publish reliable data and information, but the author and publisher cannot assume responsibility for the validity of all materials or the consequences of their use. The authors and publishers have attempted to trace the copyright holders of all material reproduced in this publication and apologize to copyright holders if permission to publish in this form has not been obtained. If any copyright material has not been acknowledged please write and let us know so we may rectify in any future reprint.

Trademark Notice: Product or corporate names may be trademarks or registered trademarks, and are used only for identification and explanation without intent to infringe.

Visit the **Taylor & Francis Web site at**
<http://www.taylorandfrancis.com>

and the CRC Press Web site at
<http://www.crcpress.com>

To my wife, the sunshine of my life, to whom I owe everything.



Taylor & Francis

Taylor & Francis Group

<http://taylorandfrancis.com>

Contents

Foreword	xiii
Preface	xv
CHAPTER 1 ■ Basic Analysis Principles	1
1.1 CONCEPTS OF MODERN SEDIMENTATION VELOCITY DATA ANALYSIS	2
1.1.1 The Physical Model	3
1.1.2 The Computational Model of Sedimentation	4
1.1.3 Models for Optical Detection	5
1.1.3.1 Signal Increments	5
1.1.3.2 Baselines	8
1.1.3.3 Effects of Finite Optical Resolution	9
1.1.3.4 Temporal Lag of Radial Scanning	9
1.1.4 Fitting	10
1.1.4.1 Accommodating Time-Invariant and Radial-Invariant Baselines	11
1.1.4.2 Constraints and Regularization	12
1.1.4.3 Global Analysis of SV and Global Multi-Method Analysis	13
1.1.4.4 Verifying the Goodness of Fit	14
1.1.4.5 Hierarchical Multi-Step Analysis	14
1.1.5 Estimating Parameter Uncertainties	15
1.2 FUNDAMENTAL FORCES AND ESSENTIAL MACROMOLECULAR PARAMETERS FOR MODELING	16
1.2.1 Apparent Macromolecular Parameters and the \bar{v} -Scale	16
1.2.2 Fundamental Forces and the Svedberg Equation	18
CHAPTER 2 ■ Sedimentation of Discrete Non-Interacting Particles	21
2.1 SEDIMENTATION BOUNDARIES OF NON-DIFFUSING PARTICLES	21
2.1.1 Non-Diffusing Species in Compressible Solvents	27

2.1.2	Detection of Non-Diffusing Species with Finite Scan Velocity	30
2.2	DIFFUSING PARTICLES AND THE LAMM EQUATION	31
2.2.1	Phenomenology and Derivation of the Lamm Equation	31
2.2.2	Approximate and Special Case Solutions	34
2.2.3	Initial Conditions	37
2.2.4	Time-Varying Centrifugal Fields	40
2.2.5	Dynamic Density Gradients	44
2.3	THE TRANSPORT METHOD	47
2.3.1	Mass Balance in Sedimentation Velocity	47
2.3.2	The Weighted-Average Sedimentation Coefficient	49
2.3.3	Second Moment Analysis	53
CHAPTER	3 ■ Properties of Sedimentation Coefficient Distributions	55
3.1	OUTLINE OF THE PROBLEM	55
3.2	BASIC FRAMEWORK	61
3.2.1	Definition	61
3.2.2	Range of the Distribution	62
3.2.3	Discretization	63
3.2.4	Fitting Combinations of Model Functions to Experimental Data	63
3.2.5	Transformation to Standard Conditions	66
3.3	REGULARIZATION	66
3.4	DISTRIBUTIONS AND s_w IN THE TRANSPORT METHOD	71
3.5	STATISTICAL CONFIDENCE LIMITS	72
CHAPTER	4 ■ Distributions of Non-Diffusing Particles	77
4.1	THE APPARENT SEDIMENTATION COEFFICIENT DISTRIBUTION $ls-g^*(s)$	79
4.2	REPRESENTATION OF THE SEDIMENTATION BOUNDARY SHAPE	82
4.3	$g^*(s)$ AND THE RATE OF CHANGE OF THE SEDIMENTATION SIGNAL	84
4.4	APPLICATION OF $ls-g^*(s)$ UNDER CONDITIONS WHERE DIFFUSION IS NOT NEGLIGIBLE	86
CHAPTER	5 ■ Distributions of Diffusing Particles	91
5.1	TWO-DIMENSIONAL SIZE-AND-SHAPE DISTRIBUTIONS	91
5.2	THE GENERAL $c(s, *)$ DISTRIBUTION	96
5.3	GLOBAL MODELING OF SIZE-AND-SHAPE DISTRIBUTIONS	97

5.4	THE SEDIMENTATION COEFFICIENT DISTRIBUTION $c(s)$	99
5.4.1	Scaling Law Based on an Average Frictional Ratio $f_{r,w}$	100
5.4.2	Segmented $c(s)$ Distributions with Multiple Frictional Ratios and Hybrid Discrete/Continuous Distributions	106
5.4.3	$c(s)$ with Constant Diffusion Coefficient or with Known Frictional Ratio	109
5.4.4	$c(s)$ in Density Contrast Experiments	110
5.4.5	$c(s)$ with Segments of Constant Molar Mass: Conformational Changes	111
5.4.6	Distributions of Wormlike Chains	112
5.4.7	Hydrodynamic Scale Relationships with Power Laws	113
5.4.8	$c(s)$ with Tabulated Hydrodynamic Relationships	113
5.4.9	Relationship between Different $c(s)$ Variants	114
5.5	THE MOLAR MASS DISTRIBUTION $c(M)$	115
5.6	LIMITATIONS OF DIFFUSIONAL DECONVOLUTION OF LARGE PARTICLES WITH ANY METHOD	117
5.7	BAYESIAN ANALYSIS	118
5.8	SUMMARY: LEVELS OF INFORMATION	127
CHAPTER	6 ■ Sedimentation Coefficient Distributions from Boundary Derivatives and Extrapolations	131
6.1	THE METHOD BY VAN HOLDE AND WEISCHET TO ESTIMATE THE INTEGRAL SEDIMENTATION COEFFICIENT DISTRIBUTION $G(s)$	132
6.1.1	Boundary Divisions: Diffusion-Free Polydisperse Mixtures	133
6.1.2	Extrapolation to Infinite Time for Eliminating Diffusion of a Single Species	135
6.1.3	Application to Mixtures: Diagnostic of Heterogeneity	137
6.2	THE TIME-DERIVATIVE APPROACH TO $g^*(s)$ BY STAFFORD	140
6.2.1	Analytical Relationships	140
6.2.2	Numerical Approximation of the Time-Derivative	142
6.2.3	Applications of dc/dt -derived $g^*(s)$ or $g(s^*)$	146
6.3	LIMITING RELATIONSHIP BETWEEN $G(s)$ AND $g^*(s)$	149
6.4	DATA TRANSFORMATIONS, MODEL-FREE, AND ALGORITHMICALLY DEFINED APPROACHES	150
CHAPTER	7 ■ Multi-Component Distributions	153
7.1	MULTI-SIGNAL MULTI-COMPONENT SEDIMENTATION COEFFICIENT DISTRIBUTIONS	153